

STANDARD DEPARTURE  
CHART - INSTRUMENT  
(SID) - ICAO

TRANSITION ALTITUDE  
10000 FT

ASTANA TOWER 135.5  
ASTANA APPROACH 124.6  
ASTANA RADAR 120.7  
ASTANA ATIS(EN) 129.5  
ASTANA ATIS(RU) 128.3

BOLSU 2B, OLGAS 2B  
(RNAV 1 SID BASED ON GNSS)

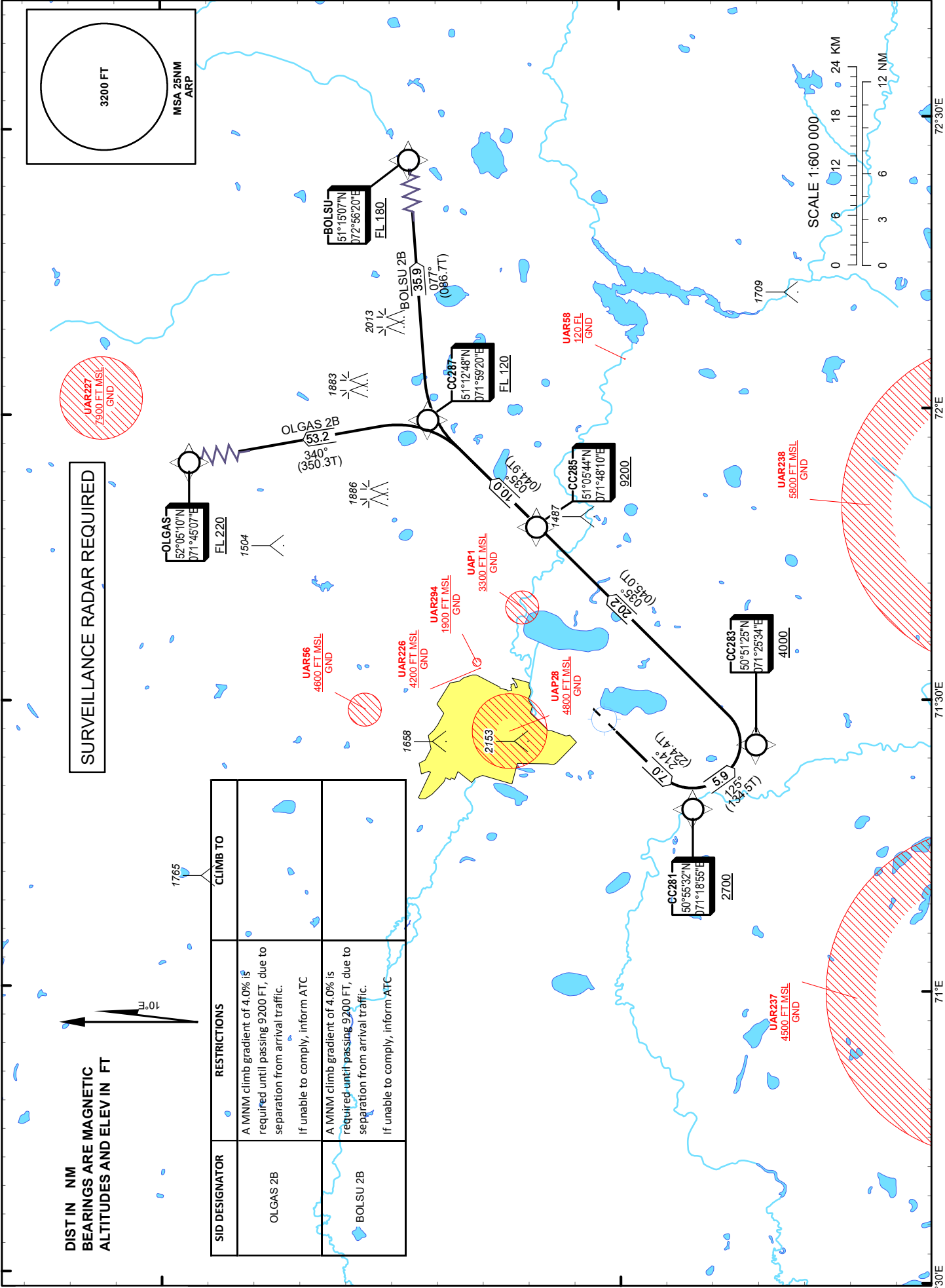
ASTANA  
NURSULTAN NAZARBAYEV  
INTERNATIONAL AIRPORT  
RWY 22

CHANGE: MSA, CC287 ALT.

DIST IN NM  
BEARINGS ARE MAGNETIC  
ALTITUDES AND ELEV IN FT

SURVEILLANCE RADAR REQUIRED

SID DESIGNATOR	RESTRICTIONS	CLIMB TO
OLGAS 2B	A MNM climb gradient of 4.0% is required until passing 9200 FT, due to separation from arrival traffic. If unable to comply, inform ATC	
BOLSU 2B	A MNM climb gradient of 4.0% is required until passing 9200 FT, due to separation from arrival traffic. If unable to comply, inform ATC	



TABULAR DESCRIPTION

BOLSU 2B RWY22											
Serial Number	Path Descriptor	Waypoint Identifier	Fly - over	Course °M(°T)	Magnetic Variation(°)	Distance NM	Turn Direction	Altitude FT	Speed KT	VPA (°)	Navigation Specification
10	CF	CC281	-	214(224.4)	10	7	-	+2700		2.5	RNAV1
20	TF	CC283	-	125(134.5)	10	5.9	L	+4000		2.5	RNAV1
30	TF	CC285	-	035(045)	10	20.2	L	+9200	-250	2.5	RNAV1
40	TF	CC287	-	035(044.9)	10	10	-	+FL120		2.6	RNAV1
50	TF	BOLSU	-	077(086.7)	10	35.9	R	+FL180		1.9	RNAV1

WAYPOINT LIST

BOLSU 2B		
Waypoint Identifier	Coordinates	
DER	510031.69N	0712641.10E
CC281	505532.44N	0711855.42E
CC283	505124.63N	0712534.27E
CC285	510543.68N	0714809.57E
CC287	511248.18N	0715919.74E
BOLSU	511507.00N	0725620.00E

TABULAR DESCRIPTION

OLGAS 2B RWY22											
Serial Number	Path Descriptor	Waypoint Identifier	Fly - over	Course °M(°T)	Magnetic Variation(°)	Distance NM	Turn Direction	Altitude FT	Speed KT	VPA (°)	Navigation Specification
10	CF	CC281	-	214(224.4)	10	7	-	+2700		2.5	RNAV1
20	TF	CC283	-	125(134.5)	10	5.9	L	+4000		2.5	RNAV1
30	TF	CC285	-	035(045)	10	20.2	L	+9200	-250	2.5	RNAV1
40	TF	CC287	-	035(044.9)	10	10	-	+FL120		2.6	RNAV1
50	TF	OLGAS	-	340(350.3)	10	53.2	L	+FL220		1.9	RNAV1

WAYPOINT LIST

OLGAS 2B		
Waypoint Identifier	Coordinates	
DER	510031.69N	0712641.10E
CC281	505532.44N	0711855.42E
CC283	505124.63N	0712534.27E
CC285	510543.68N	0714809.57E
CC287	511248.18N	0715919.74E
OLGAS	520510.00N	0714507.00E